

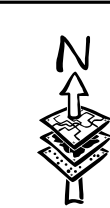


PREDIO : 370 - Maria Albina

715000

716000

717000



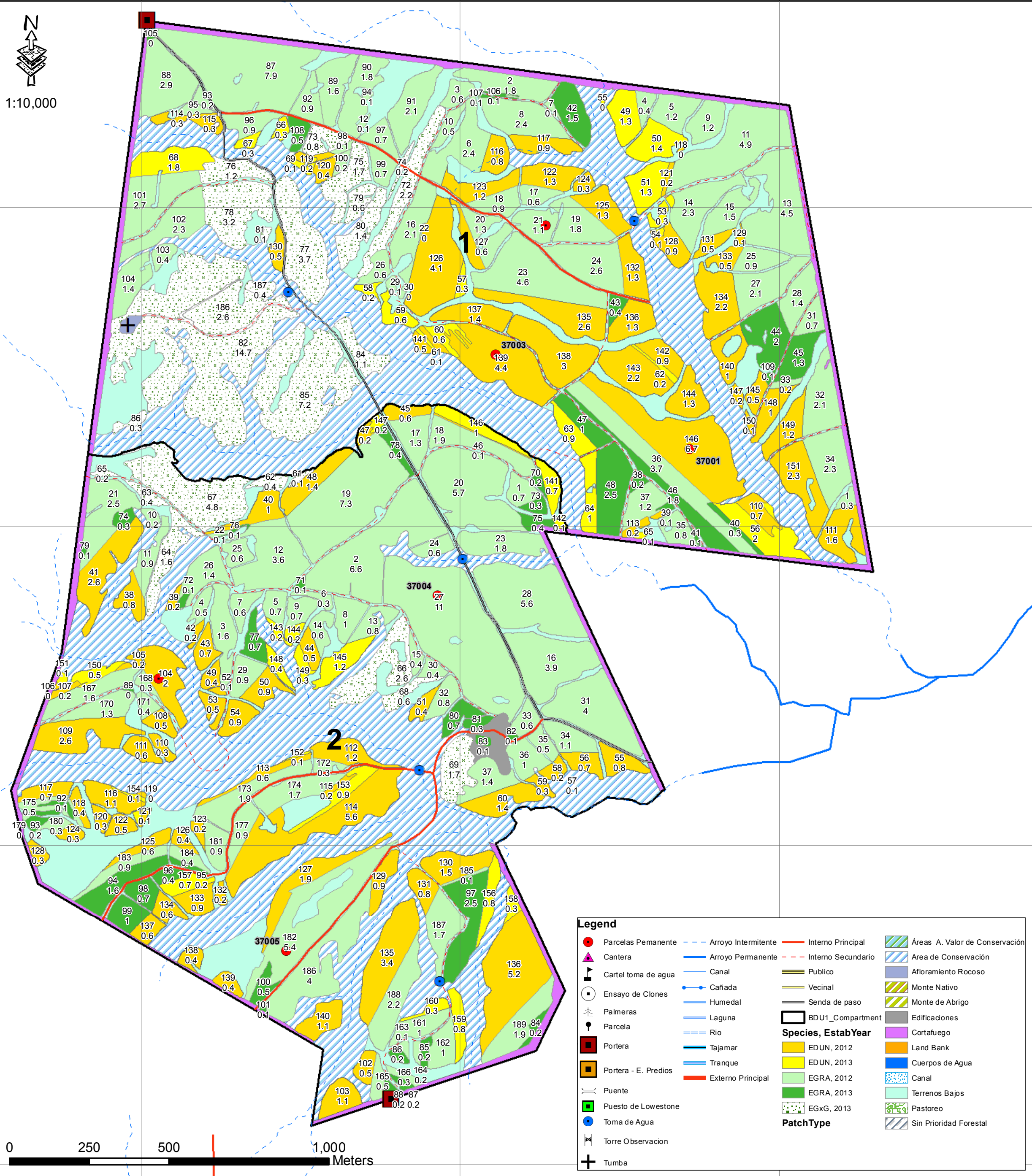
1:10,000

6301000

6300000

6299000

6298000



Legend

- Parcelas Permanente
- Arroyo Intermitente
- Arroyo Permanente
- Canal
- Cañada
- Humedal
- Laguna
- Rio
- Tajamar
- Tranque
- Externo Principal
- Interno Principal
- Interno Secundario
- Publico
- Vecinal
- Senda de paso
- BDU1_Compartment
- Species, EstabYear
- EDUN, 2012
- EDUN, 2013
- EGRA, 2012
- EGRA, 2013
- EGxG, 2013
- PatchType
- Áreas A. Valor de Conservación
- Area de Conservación
- Afloramiento Rocoso
- Monte Nativo
- Monte de Abrigo
- Edificaciones
- Cortafuego
- Land Bank
- Cuerpos de Agua
- Canal
- Terrenos Bajos
- Pastoreo
- Sin Prioridad Forestal
- Tumba



715000

716000

717000

| BDU | Farm | Department | Compartment | Area (ha) |
|--------------|--------------------|----------------|-------------|--------------|
| 1 | 370 - Maria Albina | Treinta y Tres | 1 | 296.3 |
| | | | 2 | 294.3 |
| Total | | | | 590.6 |

| Farm | Compartment | Stand | Species | YOE | Area (ha) |
|----------------------|-------------|-------|---------|------|--------------|
| 370 - Maria Albina | 1 | 1 | EGRA | 2012 | 49.6 |
| | | 10 | EGRA | 2013 | 0.8 |
| | | 11 | EDUN | 2012 | 51.0 |
| | | 2 | EGRA | 2012 | 5.7 |
| | | 3 | EGRA | 2013 | 11.1 |
| | | 4 | EDUN | 2013 | 4.5 |
| | | 5 | EDUN | 2013 | 0.0 |
| | | 6 | EDUN | 2013 | 5.9 |
| | | 7 | EDUN | 2013 | 2.5 |
| | 8 | EGxG | 2013 | 41.5 | |
| | 9 | EGRA | 2012 | 27.4 | |
| | 2 | 1 | EGRA | 2012 | 73.7 |
| | | 2 | EDUN | 2012 | 15.0 |
| | | 3 | EGxG | 2013 | 12.5 |
| | | 4 | EGRA | 2013 | 3.8 |
| | | 5 | EGRA | 2013 | 8.5 |
| | | 6 | EDUN | 2012 | 38.3 |
| | | 7 | EDUN | 2013 | 4.3 |
| 8 | | EDUN | 2013 | 4.6 | |
| 9 | | EGRA | 2012 | 29.8 | |
| Total general | | | | | 390.5 |

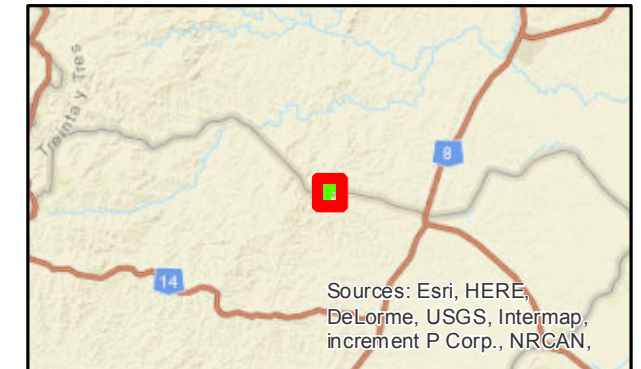
| Farm | Compartment | Land use | YOE | Area (ha) |
|----------------------|-------------|----------------------|------|--------------|
| 370 - Maria Albina | | 1 EDUN | 2012 | 51.0 |
| | | EDUN | 2013 | 12.9 |
| | | EGRA | 2012 | 82.7 |
| | | EGRA | 2013 | 11.9 |
| | | Area de conservación | - | 55.2 |
| | | EGxG | 2013 | 41.5 |
| | | Terrenos Bajos | - | 30.6 |
| | | Camino | - | 0.5 |
| | | Corta Fuego | - | 9.7 |
| | | Afloramiento Rocoso | - | 0.3 |
| | | 2 EDUN | 2012 | 53.3 |
| | | EDUN | 2013 | 8.9 |
| | | EGRA | 2012 | 103.5 |
| | | EGRA | 2013 | 12.4 |
| | | Area de conservación | - | 65.4 |
| EGxG | 2013 | 12.5 | | |
| Terrenos Bajos | - | 29.8 | | |
| Corta Fuego | - | 7.2 | | |
| Edificaciones | - | 1.4 | | |
| Total general | | | | 590.6 |

Hidrografía

| Nombre | Tipo (m) |
|----------------------|----------------|
| CAÑADA LOS CEIBOS | 2338.1 |
| SIN NOMBRE | 13053.7 |
| Total general | 15391.8 |

Datos Cartográficos
 - Datum WGS-84
 - Proyección UTM
 - Huso 21 Sur

Plano de Ubicación



Sources: Esri, HERE, DeLorme, USGS, Intermap, increment P Corp., NRCAN.

SEPTIEMBRE 2017